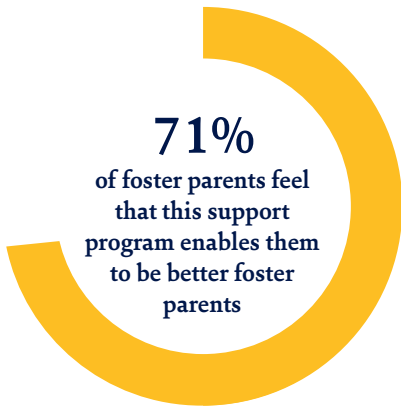


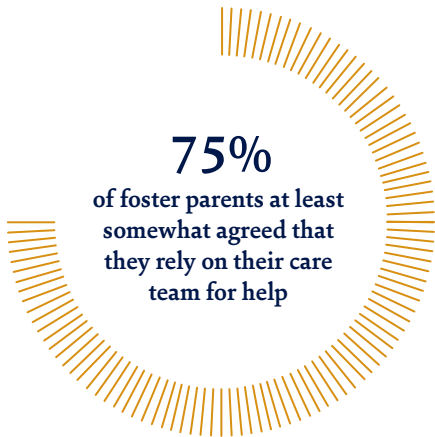
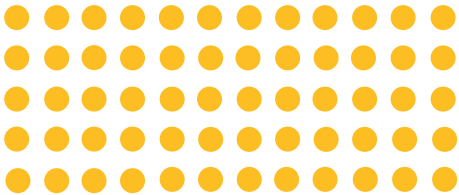
U.S. Foster Support Program

Data based on eight foster families who were served by the program as of March 2020.

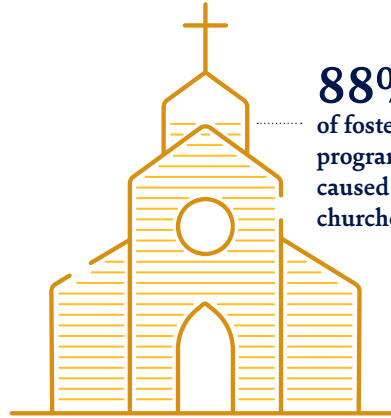
PHYSICAL



100% of foster parents supported by care teams strongly agreed that they trust their care teams



RELATIONAL



88% of foster parents felt that this program at least somewhat caused them to view Christian churches more positively

In the past 12 months, foster agencies have reached out about 10 times to ask for help

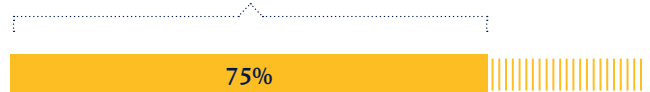


5

foster agencies said they know about this program

SPIRITUAL

Those supported by care teams who remembered someone from their care team sharing their faith with them in the past 30 days



50% of those supported by an individual volunteer remembered someone from this program ever sharing their faith or God's Word with them.

